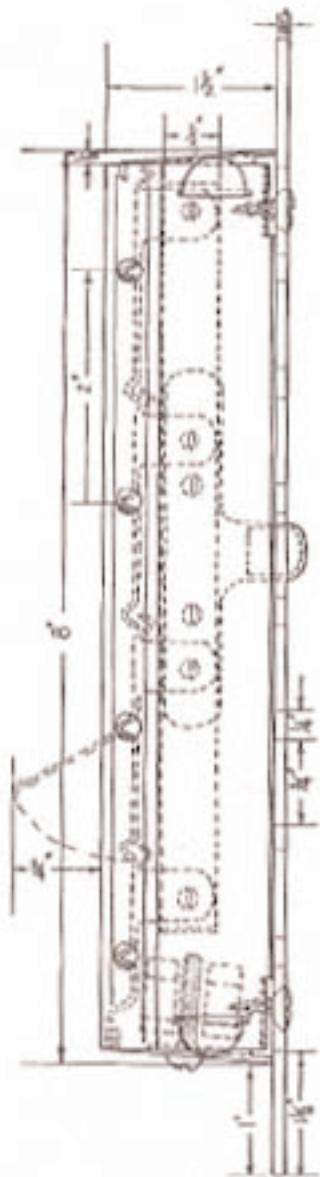


EMPIRE

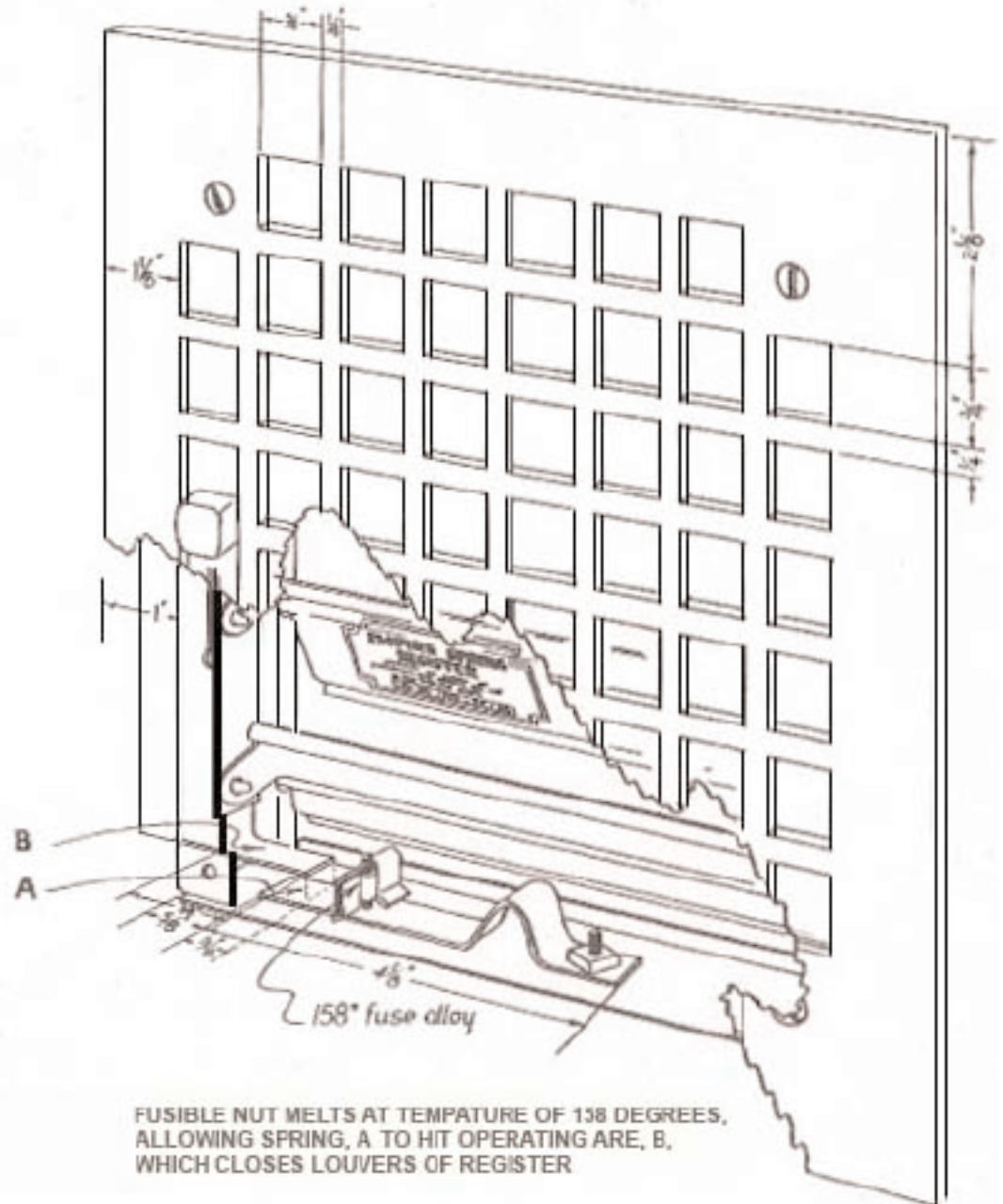
VENTILATION EQUIPMENT CO., INC.

TOP OF THE LINE VENTILATORS
FOR BOTTOM LINE RESULTS

SPRING REGISTER



LOUVERS EXTEND
3/4" WHEN OPEN



FUSIBLE NUT MELTS AT TEMPERATURE OF 158 DEGREES,
ALLOWING SPRING, A TO HIT OPERATING ARM, B,
WHICH CLOSES LOUVERS OF REGISTER